

SUPPORTING DOCUMENT

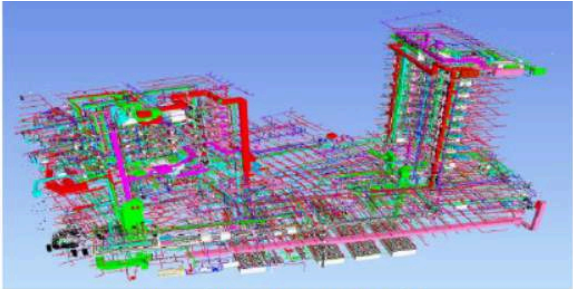
Entry description (Will be made public if the entry is shortlisted) (200 words) *



Technical execution: How was the digital twin implemented on the project? (300 Words



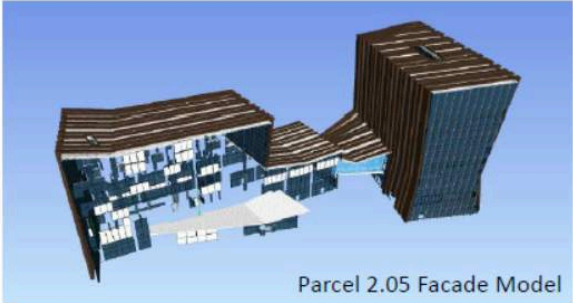
3D Rendered image of 205 from BIM Model



Parcel 205 MEP BIM Model

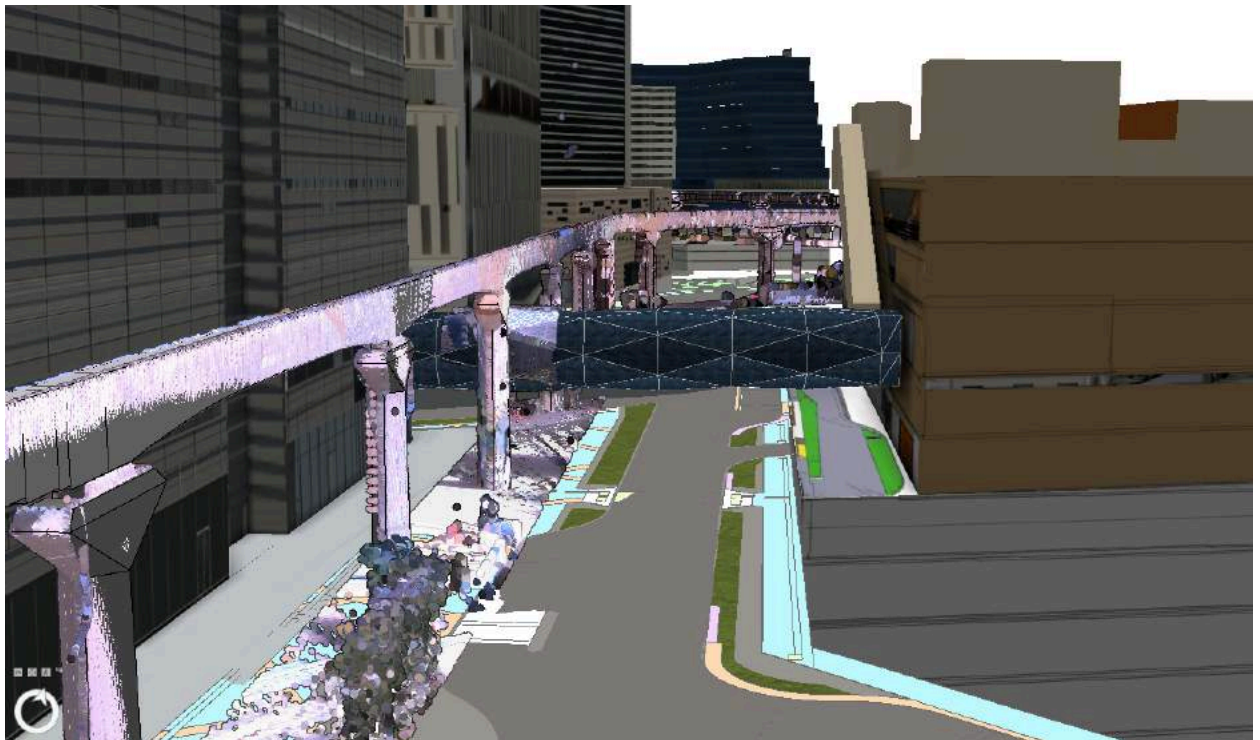


Parcel 2.05 ASI Model

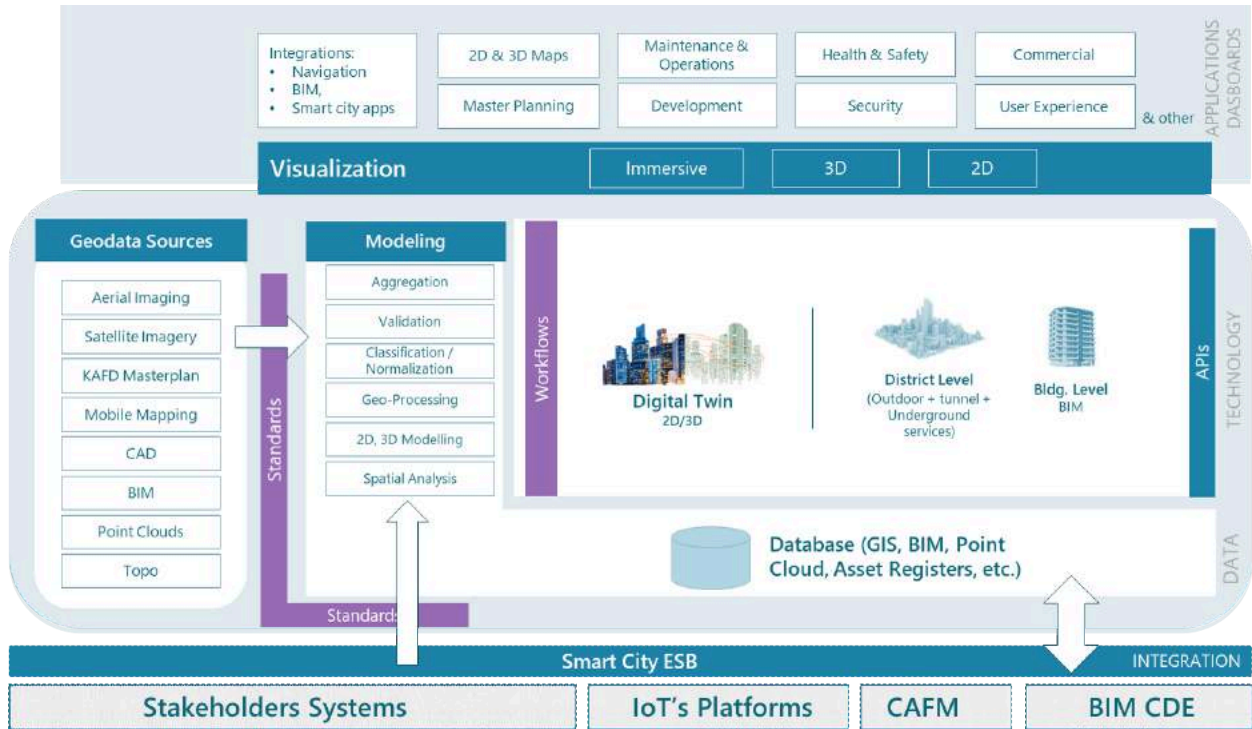


Parcel 2.05 Facade Model

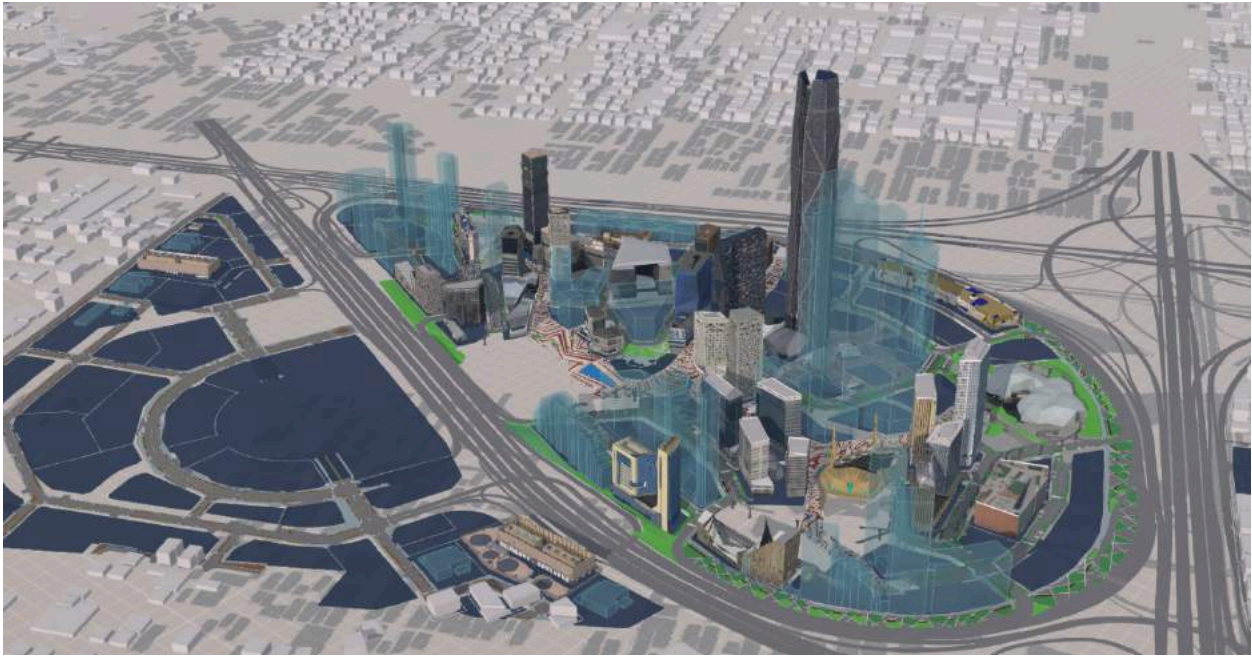




Planning: How did the organisation approach the necessary planning for the digital twin implementation? (300 words) *



Innovation: How was the digital twin used to demonstrate innovation?
(300 words) *





ESG Impact: How did the digital twin make an Environmental, Social, and Governance (ESG) impact? (300 words) *

